



Scottish
Water

IMPROVING URBAN WATERS





£500million programme of additional investment

Key aims:

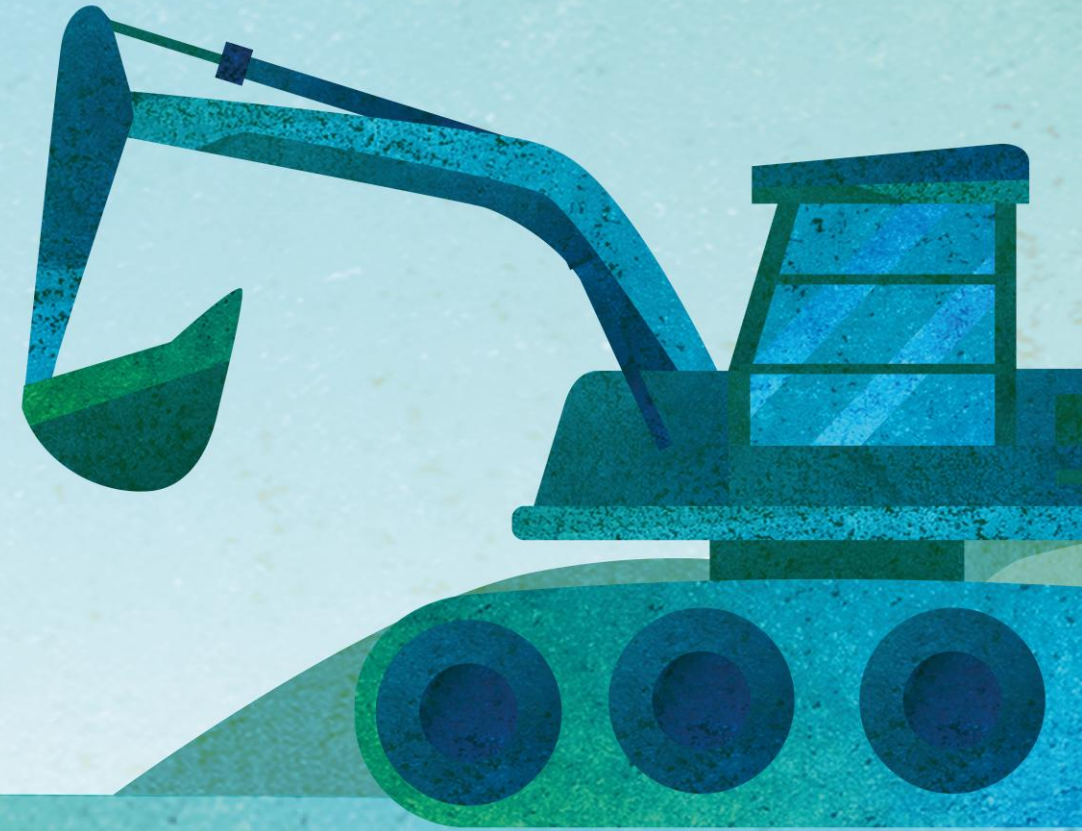
- Improve water quality
- Increase monitoring and reporting
- Significantly reduce sewer-related debris in the environment
- Reduce spills through targeted infrastructure investment





Scottish
Water

DRAINING THE RAIN

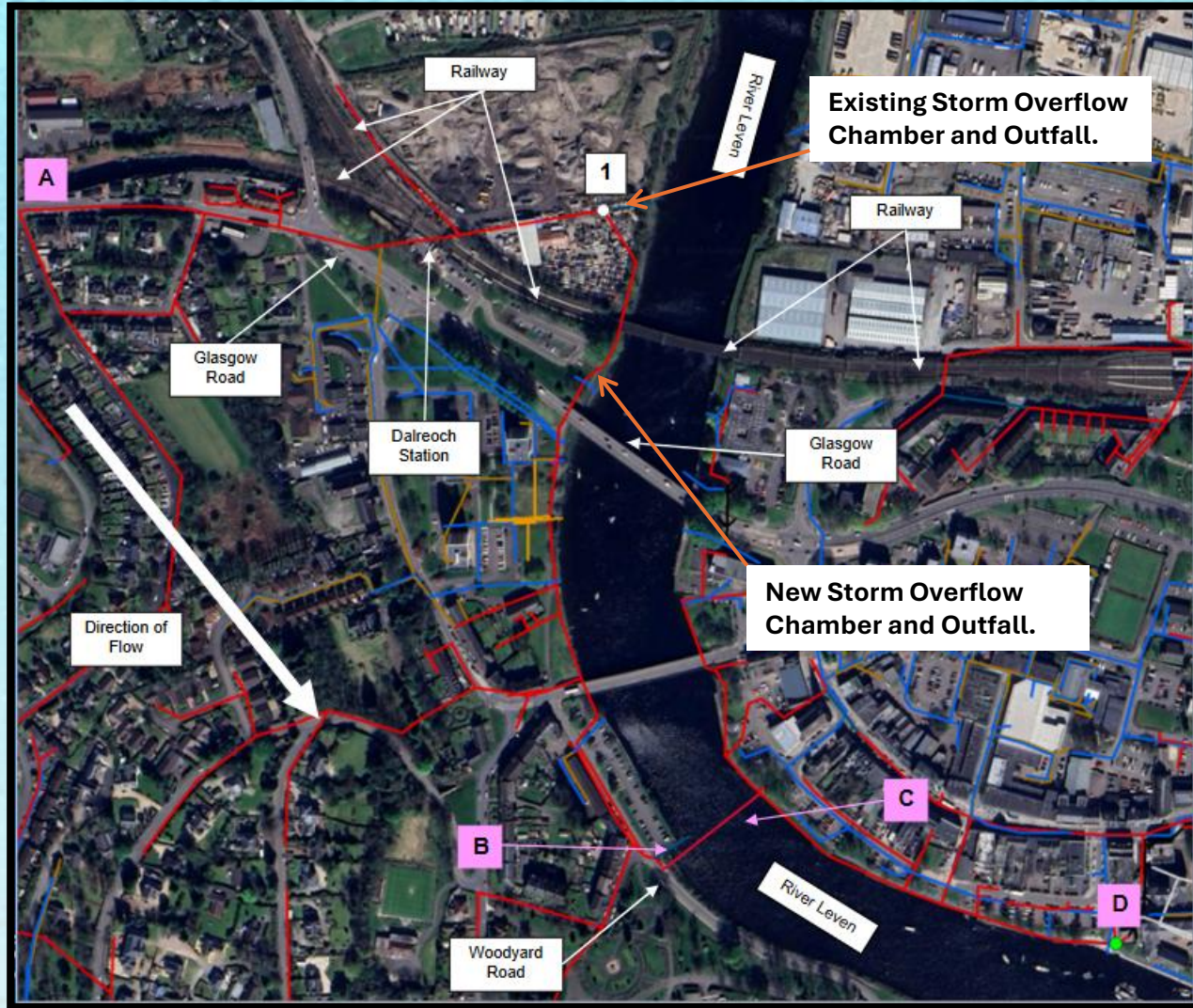


Need for Investment

- Dalreoch Scrapyard Storm Overflow, currently located in Dumbarton, within the has been identified as a high priority site by Scottish Water and SEPA.
- The existing Storm Overflow Chamber includes a high-level spill pipe that discharges into the River Leven.
- Unscreened spills occur from this Storm Overflow during the 5-year return period event, which has resulted in numerous complaints regarding Sewer Related Debris (SRD) from members of the public.
- This has resulted in SEPA classifying this as one of the 108 High Priority Needs.



Location of Investment



Dalreoch Scrapyard Storm Overflow (Google Earth)

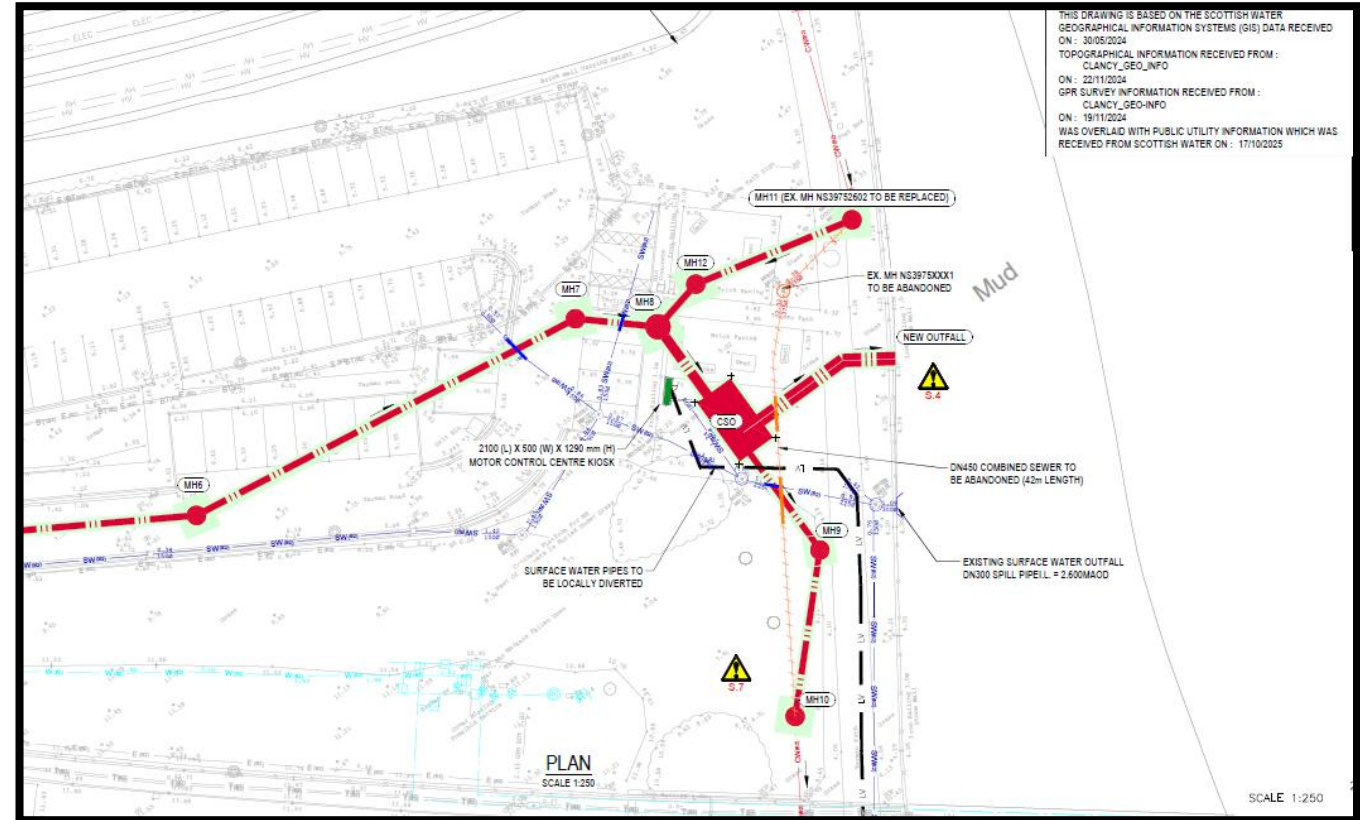


Existing Storm Overflow Chamber

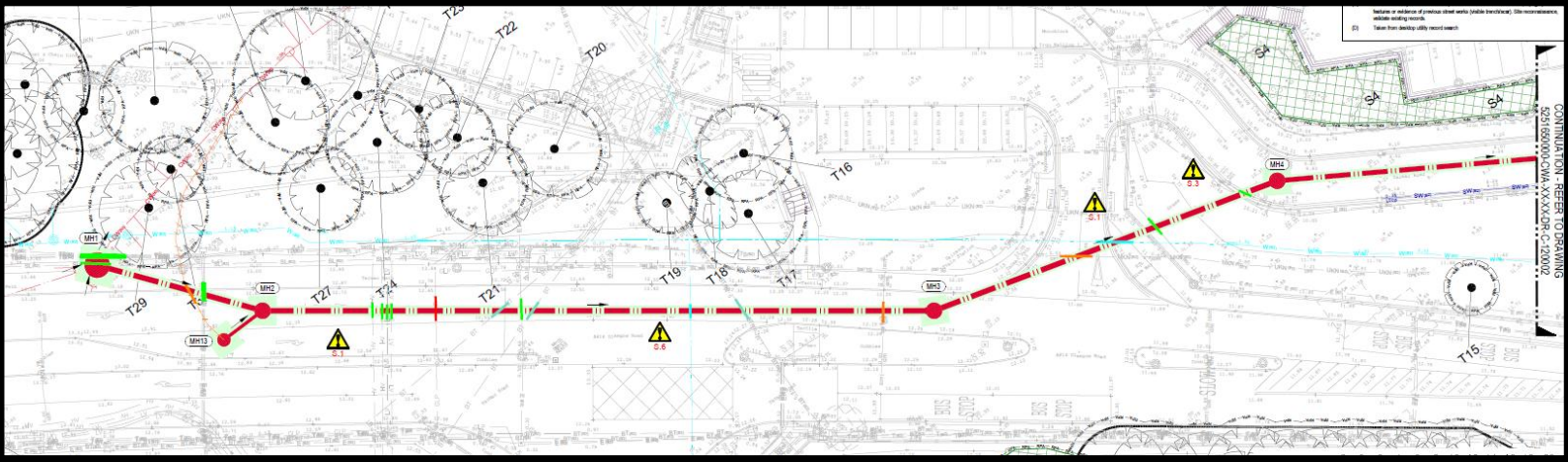
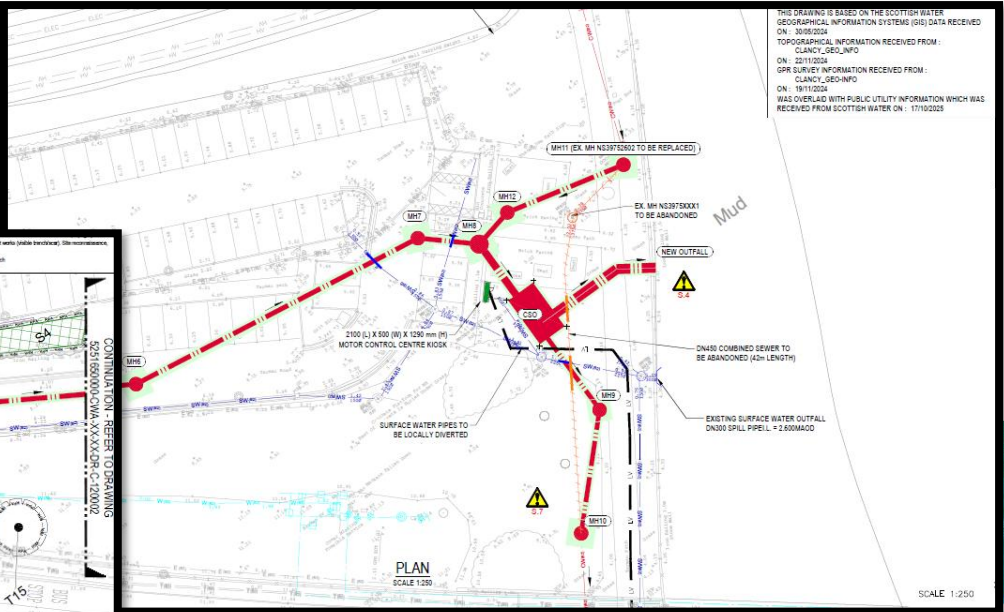


Engineering Solution

- Installation of new Storm Overflow Chamber, outfall pipe and associated sewer infrastructure located within the Dalreoch Train Station park and ride.
- The positioning of the new Storm Overflow Chamber and outfall at this location will mean the existing one can be decommissioned.
- This solution will ensure spills up to and including the 5-year return period will be screened, and reduce annual spill frequency and duration to the River Leven when compared to the baseline.
- This addresses both functional and aesthetic requirements and has approval from SEPA.



Engineering Solution



Dalreoch Car Park - Access Requirements



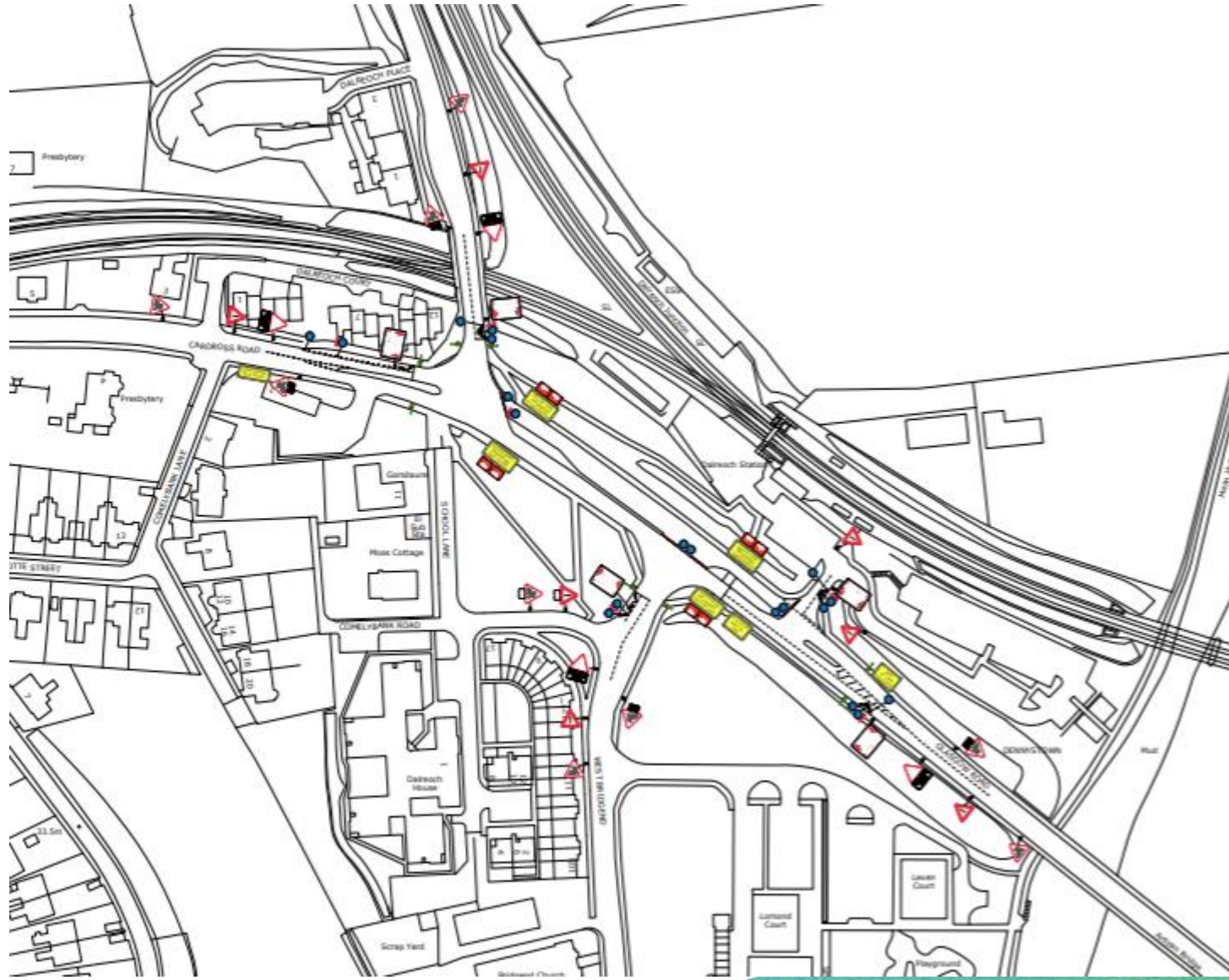
Dalreoch Car Park - Access Requirements



Dalreoch Car Park - Access Requirements



Dalreoch Car Park – Traffic Management



Key Project Programme Dates

- Start on Site – Monday 4th May
 - Phase 1 – 5 months – May - September
 - Phase 2 – 2 months – September - November
 - Phase 3 – 5 months – November - April

- Completion on Site – April 2027

Working Hours – Monday-Friday 08:00-18:00

- Potential need for weekend working, dependent on progress.





Scottish
Water

ENHANCING THE ENVIRONMENT

